

BENEFITING



**BICYCLE  
COALITION**  
OF GREATER  
PHILADELPHIA



2022



# EVENT GUIDE

OCTOBER 15





**KEEP GOING  
AND WE'LL KEEP  
YOU GOING**

**PHILLY RUNS ON  
DUNKIN'®**

©2022 DD IP Holder LLC.



SHAKE  SHACK®

**GOOD BURGERS.  
GOOD TIMES.**

ORDER AHEAD FOR PICK-UP AT [SHAKESHACK.COM](https://shakeshack.com)

# TABLE OF CONTENTS

- 4** Welcome
- 6** Event Schedule
- 7** Packet Pickup Party
- 9** Getting to the Start
- 12** Start Line Details
- 13** Bike Rentals
- 14** Course Map
- 15** Along the Route
- 18** Getting Ready for the Philly Bike Ride
- 19** Rules of the Ride
- 20** Finish Festival
- 23** Giving Back
- 24** Official Merchandise
- 25** Our Partners



## Welcome to the 2022 Philly Bike Ride!



Welcome to the inaugural Philly Bike Ride! We are pleased to present this unique event in partnership with the Bicycle Coalition of Greater Philadelphia (BCGP) to celebrate cycling in the city of brotherly love. Today is your day to enjoy the city in a car-free environment.

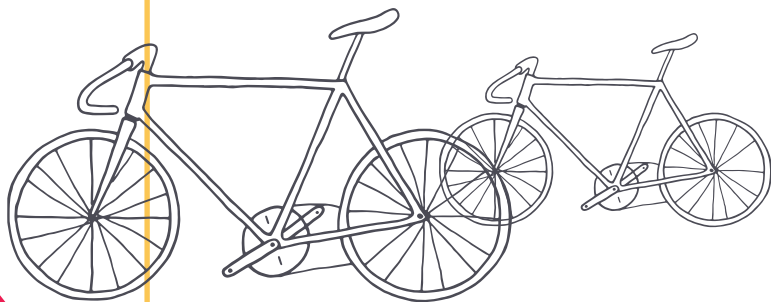
We would like to express our sincere gratitude to Mayor Kenney, the Philadelphia City Council, the Office of Transportation, Infrastructure, and Sustainability (OTIS), the Philadelphia Police and Fire Departments, as well as all the city and state agencies and offices that have worked to make this event possible.

A special thank you to the hundreds of volunteers who support Philly Bike Ride, from getting you on your way at the start line, to welcoming you at the Finish Festival and everything in between.

Finally, we would like to thank you, the participants, for joining us on this wonderful day. Your support not only allows us to start a new tradition in our community, but also helps raise significant dollars for the Bicycle Coalition Youth Cycling Program, which creates meaningful opportunities for future generations of riders.

We hope you have a safe and fun ride – keep on pedaling!

The Philly Bike Ride Team



## The Bicycle Coalition of Greater Philadelphia

We are thrilled to be a founding partner of this unique ride through Philadelphia's streets. We hope that your 20-mile experience inspires you to continue being part of a growing movement of bicyclists who value safe streets.

The Bicycle Coalition is dedicated to promoting bicycling as a healthy, low-cost, environmentally-friendly form of recreation and transportation, and we hope that you join us to advocate and educate, make streets and trails safe and accessible, and encourage more people to engage in safe bicycling.

Your participation in the ride generates awareness for an important cause and raises significant dollars for our youth cycling development programs. We thank the Philly Bike Ride team, the volunteers and all of the public safety stakeholders involved for organizing this event and supporting the work of the Bicycle Coalition of Greater Philadelphia.

Our team would also like to thank you, the participants, for joining us today. We look forward to riding with all of you!

BENEFITING



# EVENT SCHEDULE

## PACKET PICKUP PARTY

**Friday, October 14**

11:00 AM TO 8:00 PM

Eakins Oval  
In front of the Museum of Art  
2600 Benjamin Franklin Pkwy  
Philadelphia, PA 19130

**\*IF YOU ARE JOINING US THIS OCTOBER 15, YOU MUST GET YOUR PACKET PRIOR TO THE RIDE DAY**

Unless your shipping option is packet mailing, we ask you to attend Packet Pickup to get your Rider Identification Kit. There will not be packet pickup available the morning of the event. Check out more Packet Pickup information on the next page.

## RIDE DAY

**Saturday, October 15**

5:30 AM

Riders can enter the corrals on Benjamin Franklin Parkway through N 20th St. and N 22nd St., coming from Race St. or Hamilton St.

7:15 AM

Corrals Close  
All riders must be in their corrals.

7:25 AM

National Anthem

7:30 AM

Ride begins

9:00 AM

Finish Festival begins with DJ Nash

12:30 PM

Finish Festival concludes.  
See you next year!

# PACKET PICKUP PARTY

**ALL PARTICIPANTS MUST GET THEIR PACKET PRIOR TO EVENT DAY.**

Unless you purchased packet mailing or signed up as a VIP or Standard + Jersey registrant, you must attend packet pickup to get your Rider Identification Kit in advance.

**WHEN:**

Friday, 10/14  
11AM-8PM

**WHERE:**

Eakins Oval  
In front of the  
Museum of Art

2600 Benjamin  
Franklin Pkwy  
Philadelphia, PA  
19130



AT PACKET PICKUP, YOU WILL RECEIVE YOUR WATER BOTTLE AND RIDER IDENTIFICATION KIT (RIK), which consists of a paper bib number you must pin to the front of your shirt and a helmet sticker you must stick to the front of your helmet. **ALL PARTICIPANTS MUST HAVE THEIR RIK IN PLACE IN ORDER TO ENTER THE START CORRALS AT THE EVENT.**

Everyone is welcome to the Packet Pickup. Come through to get ready for Philly Bike Ride and enjoy special offers at the PBR Pop-Up Shop.

The EAKINS OVAL is located 1 mile away from Fairmont, Spring Garden and Race-Vine metro stations. If you can, we recommend that you bike or carpool to the Eakins Oval as there is limited parking nearby. If you need to drive, we recommend parking at one of the several parking garages available within 0.5 miles





**CAN'T ATTEND PACKET PICKUP? SEND A PROXY TO GET YOUR RIK**  
If you did not choose packet mailing during registration and you cannot attend Packet Pickup, you MUST send a proxy to get your RIK. You don't need to notify Philly Bike Ride about sending a proxy to get your RIK, however your proxy must have a photo/photocopy of your photo ID (or passport). Photo can be displayed on a cellphone. No ID is required for participants under 18.

**WATER BOTTLE**  
A Philly Bike Ride 2022 Water Bottle will be given to all registrants. You can get yours at Packet Pickup or at the Info/Solutions tent at the Finish Festival, after the ride. We encourage riders to bring a water bottle for personal use. Water will be available at the start line and finish areas, and on rest stops along the course.



**RIDER IDENTIFICATION KIT (RIK)**  
In order to participate in the ride, you must be wearing your RIK. Your bib number must be attached to the front of your shirt, and the helmet sticker must be worn on your helmet.

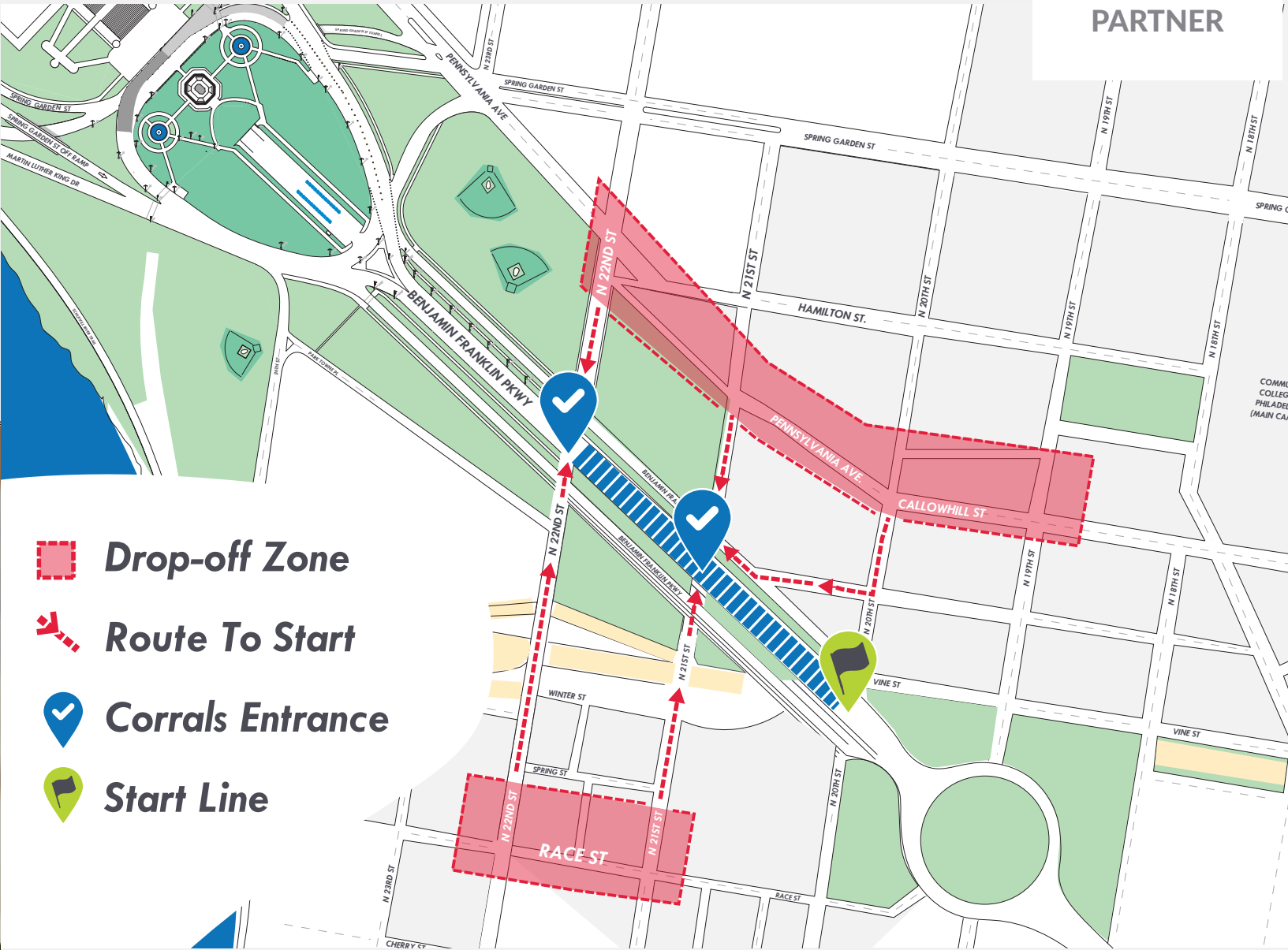


# GETTING TO THE START

## Philly Bike Ride Start Line Area

**WHEN:**  
Saturday, October 15  
7:30 AM

**WHERE:**  
Benjamin Franklin Pkwy  
Between N 20th St. and N 22nd St.



- Drop-off Zone**
- Route To Start**
- Corrals Entrance**
- Start Line**

- IMPORTANT:**
- ★ The best time to arrive is before 6:30 AM, but please plan to get to access points no later than 7:00 AM in order to be in your start corral by 7:15 AM.
  - ★ Routes on the highlighted Drop-Off Zone in the map should be open during Philly Bike Ride but all road closures are subject to change at the discretion of public safety officers.
  - ★ Corrals can be accessed from 21st St. and 22nd St. via Pennsylvania Ave / Callowhill St. and Race St.
  - ★ Visit: [PHILLYBIKERIDE.COM/ROAD-CLOSURES](https://phillybikeride.com/road-closures) for road closures and no parking zones.

[www.phillybikeexpo.com](http://www.phillybikeexpo.com)  
Pennsylvania Convention Center  
October 29 - 30, 2022

Greetings from  
**PHILLY BIKE EXPO**  
Artisans. Activists. Alternatives.

**VELOJAWN**  
BIKE SHOP

**INDUSTRY NINE**

**NITTANY MOUNTAIN WORKS**  
MADE IN USA

**PL PISCITELLO LAW**

**PACTIMO**

**CHANDI**

**RESURICK**

**PHILADELPHIA BIKE EXPO**

Modern bouquets designed for every occasion.

**URBAN STEMS**

[urbanstems.com](http://urbanstems.com)



# GETTING TO THE START



## BIKE TO THE START

If you want to add a couple miles to your course, we suggest you bike to the start! We mapped out some routes from locations around the region just for you.

Check out the recommended bike routes at [PHILLYBIKERIDE.COM/THE-RIDE/GETTING-TO-START](http://PHILLYBIKERIDE.COM/THE-RIDE/GETTING-TO-START)



## USING METRO

There are three metro stations located within less than one mile away from the Philly Bike Ride Start Line: Fairmont, Spring Garden and Race-Vine metro stations. Make sure to plan ahead and check what time the metro starts running at your departure station and the ETA to your preferred station of arrival.



## PARKING RECOMMENDATIONS

Parking nearby the event venue can be challenging, and we recommend booking a parking spot in one of the several parking garages within 0.5 miles of the event area.

# DRINK LOCAL, ANYWHERE

5 LOCATIONS, EVENT VENUES AND BEER SHIPPED DIRECTLY TO YOUR DOOR AT [CONSHYEXPRESS.COM](http://CONSHYEXPRESS.COM)



# TAKE THE TRAIN TO PHILLY BIKE RIDE

Take the train to the heart of Philadelphia and arrive at 30<sup>th</sup> Street Station, close to the ride festivities. Enjoy extra legroom, spacious seats and free Wifi.

Philly Bike Ride... *Just an Amtrak Away.*

Book now and save at [Amtrak.com](http://Amtrak.com).



peopleforbikes

# RIDE SPOT

## UNITED THROUGH GREAT BIKE RIDES

DOWNLOAD NOW





# START LINE DETAILS

At the Ride Start area, on Benjamin Franklin Pkwy between N 20th St. and N 22nd St., you will see corral entrance signs that read BEGINNER, INTERMEDIATE, ADVANCED, and VIP. These signs designate the start corrals where you will line up for the Start Line. Your corral reflects what type of bicyclist you identify as and your biking level or ability.

Please do not switch corrals and allow some space between participants while lined up inside your preferred corral. The VIP corral will be released first, followed by Advanced, Intermediate and then Beginner.

Portable restrooms and sanitizing stations will be available at the Start Line area. Keswick Cycle will be providing free safety checks before the ride starts.

BELOW IS A MAP INDICATING HOW TO ACCESS THE START LINE CORRALS.



# BIKE RENTALS

## No bike? No problem!

Bike rentals are available to reserve in advance from our partners at Unlimited Biking until 5pm on Wednesday, October 12. Visit [WWW.UNLIMITEDBIKING.COM/EVENTS/PHILLY-BIKE-RIDE](http://WWW.UNLIMITEDBIKING.COM/EVENTS/PHILLY-BIKE-RIDE) for detailed information on what bikes are available.

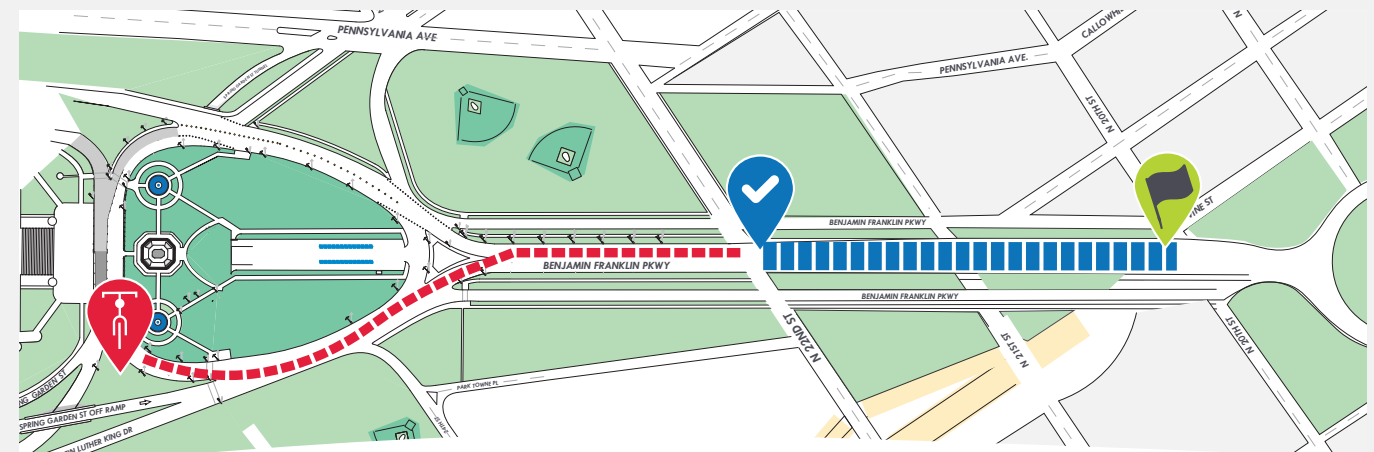
### RENTAL PICKUP DETAILS PICKUP/DROP-OFF

At the Unlimited Biking Tent, located on the south side of Eakins Oval.

**RENTAL PICKUP WILL BE AVAILABLE ON OCTOBER 15, BETWEEN 6 AM TO 7 AM.**  
The schedule allows riders enough time to bike from Rental Pickup to the Start Line.

### GETTING TO THE START LINE FROM RENTAL PICKUP

Riders will bike 0.4 miles from the rental pickup area to the corrals entry area on Benjamin Franklin Pkwy and N 22nd St.



Rental Pickup Tent Corral Entrance Start Line

## Rental Pickup Process

- 1** Present your rental confirmation at the Rentals Pickup tent. This confirmation will be sent via email by Unlimited Biking.
- 2** You will receive a helmet and a ticket with your bike size.
- 3** Exchange your ticket for your bike.
- 4** Bike a short distance to the start line and enjoy the ride.
- 5** After the ride, return your rentals at the same place.

PHILLY BIKE RIDE RENTAL PROGRAM IS A PARTNERSHIP WITH



UNLIMITED BIKING



## SIGHTS

Ride past the scenic and historic sights of Philly and stop along the route to capture special moments in video and photo.

Be careful when stopping along the course and make sure to pull over to the right side of the road to take pictures.

For safety, please indicate to other riders that you are about to stop.



## SOUNDS

Enjoy local live entertainment to keep you energized along the way, including the Red Bull MXT DJ Truck on mile 11.4.



## FLAVORS

Stop by the Shake Shack Snack Stop to enjoy a delicious bite on mile 14.



## REST STOPS/WATER STATIONS

Sanitizing stations and fully stocked rest stops with water and bananas will be available along the way on miles 4.9, 8.5, and 16. Bring your Philly Bike Ride water bottle, or another refillable water bottle for the water stations. Sanitizing and water stations will also be available at the Start Line and Finish Festival.



## BATHROOMS

Portable toilets are available at Rest Stops, Start Line and Finish Festival.



## MEDICAL HELP

Our main medical hub will be placed by the finish line. Ask any staff member, volunteer or police officer if you need medical assistance.



## BIKE SAFETY CHECK

Mobile Mechanics will be at the start line area and on course to assist riders during the event. If you get a flat tire or have a mechanical issue with your bicycle, look for a Mobile Mechanic. Keswick Cycle will provide free bike safety checks at the Start and Finish areas.



## SAG VEHICLES (SUPPORT AND GEAR)

SAG vehicles will provide transportation to the Finish Line for riders (and their bikes) who require assistance or are behind the 6 MPH pace.



## LOST AND FOUND

For lost items, check the stage at the Finish Festival. After October 15, if you're still missing something contact us at [HELLO@PHILLYBIKERIDE.COM](mailto:HELLO@PHILLYBIKERIDE.COM).

## ASSISTANCE AND EMERGENCIES

**In case of critical medical emergency, call 911.**

If you need assistance, medical attention or if your bike has a major mechanical issue, and you need transportation to the Finish Festival, contact our Ride Support Staff during the ride at **(215) 606-3562**.



# GETTING READY FOR PHILLY BIKE RIDE

**WE ASK THAT PARTICIPANTS NOT ATTEND THE RIDE SHOULD THEY EXPERIENCE ANY ILLNESS SYMPTOMS IN THE DAYS BEFORE THE RIDE.**



## BEFORE THE RIDE

- ★ Check public transportation schedule, parking availability, or best bike route.
- ★ Reserve your parking in advance. See page 10 for more info.
- ★ Check the weather and wear appropriate clothing. The event will take place rain or shine.
- ★ Check your bicycle prior to event weekend to ensure you have air in your tires, brakes working, and any quick releases tightened.
- ★ You can also stop by one of the Keswick Cycle stores in the area for a variety of services or visit their safety check station at the Start Line area.



## RIDE DAY | WHAT TO BRING

- ★ Your Rider Identification Kit (mandatory).
- ★ Helmet (mandatory).
- ★ Cell phone (fully charged).
- ★ Water bottle(s). Hydrate often during the ride.
- ★ Cash and/or credit card to purchase snacks and Philly Bike Ride official merchandise at the Finish Festival.
- ★ Photo ID.
- ★ Sunscreen and Sunglasses.
- ★ Bike lock to park your bicycle at the Bike Parking at the Finish Festival.



## YOUTH RIDER POLICY

- ★ Children under the age of 3 are not allowed on the ride.
- ★ Kids (ages 3–7) must ride with an adult on a tandem bike, in a child's seat, on a tag-along bike or in a bike trailer.
- ★ Youth riders (ages 8-17) must participate in the event with an adult riding in close proximity the entire event.



## RIDING AS A GROUP OR TEAM

- ★ Pick a meeting spot at the start line area prior to entering the rider corrals.
- ★ Make sure you and others in your group have stored important contact info.
- ★ If you get separated from your group, continue to the next rest stop and look for them there. Do not pull over to the side of the road to wait for them.

# RULES OF THE RIDE

1. **WEAR YOUR HELMET:** helmets are mandatory and required to participate in the ride. If you're not wearing a helmet, you will not be permitted to join the ride.
2. **HAVE YOUR RIDER IDENTIFICATION KIT (RIK) VISIBLE AT ALL TIMES:** affix the bib to your chest and wear your helmet sticker on the front of your helmet. You may be asked to leave the ride if any element of your RIK is missing.
3. **RESPECT OTHER BICYCLISTS AND KEEP A SAFE DISTANCE** between yourself and other bicyclists that you are riding next to or behind.
4. **BE PREDICTABLE AND RIDE IN A STRAIGHT LINE.** Keep to the right side of the roadway when riding and pass other riders on the left side of the roadway. Call out "passing on your left" if you have to pass slower riders closely and use hand signals to indicate that you are slowing down, stopping, turning or changing lanes.
5. **DO NOT RIDE AGAINST THE FLOW OF THE RIDE, NOR STOP IN THE MIDDLE OF THE ROAD.** Move completely to the right side of the road and try to find a safe place to pull off of the roadway when stopping along the route.
6. **DO NOT USE YOUR CELL PHONE WHILE BIKING.** If you wish to take pictures during the ride (which is highly encouraged) please pull over to the side of the road so you don't block other participants, share your photos on social media and tag us! [@BIKEINPHILLY](#)
7. Do not wear ear buds or any other form of headphones.
8. Keep at least one hand on the handlebars at all times.
9. Control your speed and be prepared to slow down for congestion or road hazards.
10. **E-BIKE POLICY:** Philly Bike Ride welcomes class 1, 2 and 3 e-bikes. Riders are not allowed to exclusively use the motor to propel the e-bike for an extended period of time without pedaling. ALL riders must comply with the speed limit of 18 mph.

# HAND SIGNALS FOR SAFER CYCLING





## Keep the party going at the Finish Festival!

### When:

Saturday, October 15  
9:00 AM to 12:30 PM

### Where:

Eakins Oval  
In front of the Museum of Art  
2600 Benjamin Franklin Pkwy  
Philadelphia, PA 19130

### FESTIVAL HIGHLIGHTS & ACTIVITIES

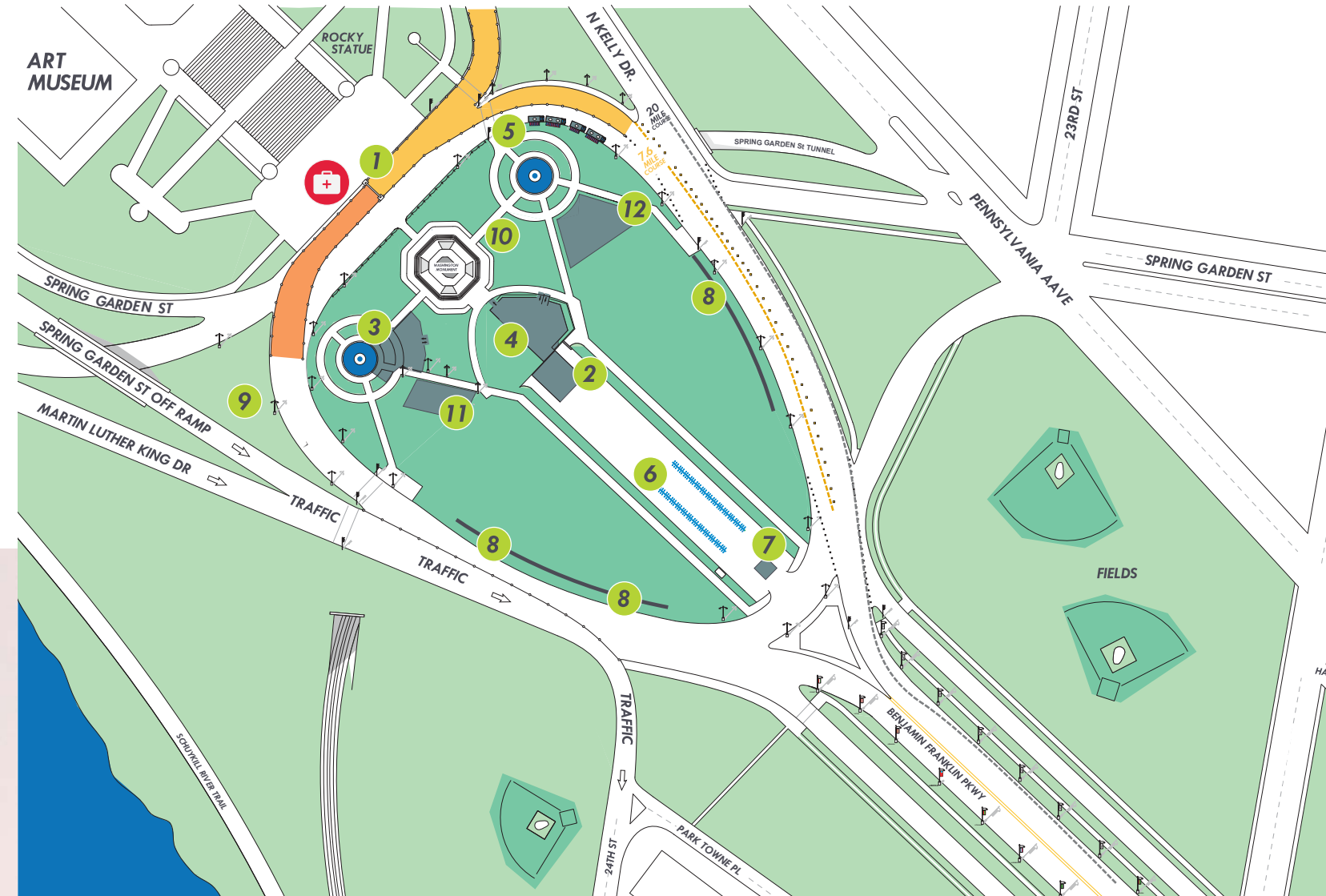
- Music at the Festival's Stage
- Conshohocken Beer Garden
- Philly Bike Ride Pop-Up Store
- Food Truck Lineup
- Fun activities and more!

### ALTOR LOCKS BIKE PARKING

**BRING YOUR BIKE LOCK.** Bike Parking with security will be available on the Oval behind the stage, so you can enjoy the Finish Festival with peace-of-mind. Bike Parking is first-come, first-serve.

### FOOD & DRINK

Grab some snacks after 20 miles! Visit the Conshohocken Beer Garden near the stage and check out the food trucks lined up by the finish line.



1. FINISH LINE
2. FESTIVAL STAGE
3. VIP LOUNGE
4. BEER GARDEN
5. FOOD TRUCKS
6. BIKE PARKING
7. WATER BOTTLE PICKUP
8. RESTROOMS
9. BIKE RENTALS
10. PHOTO ZONE
11. PHILLY BIKE RIDE POP-UP STORE
12. SPONSORS & EXHIBITORS

## Keswick CYCLE

Keswick Cycle is a neighborhood bike shop that has served the community since 1933. We offer a variety of products from entry-level to high-end as well as the area's best service shop.



Locations

Glenside, PA

Paoli, PA

Philadelphia, PA

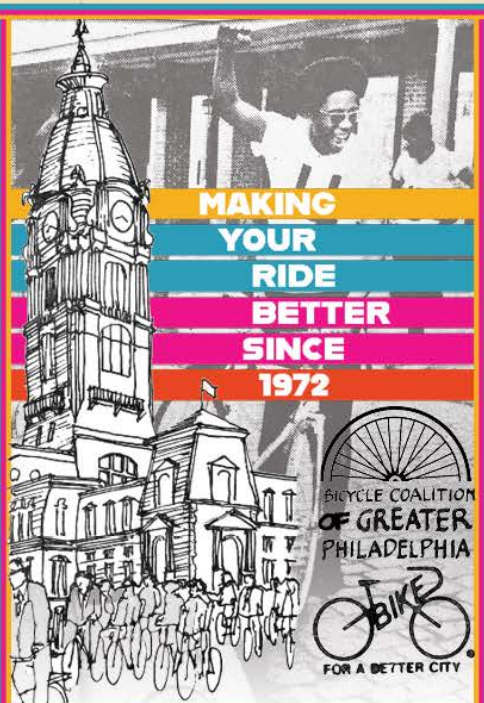




# BICYCLE COALITION OF GREATER PHILADELPHIA

## We Are EDUCATORS

- Youth leadership & teamwork
- Cycling skills & road safety for all ages, children - adults
- Free public resources
- Regular updates on regional issues & infrastructure
- Bike safety materials available in 5 languages



@bcgp  
bicyclecoalition  
bicycle.coalition

# BEYOND Better Biking...

## We Are ADVOCATES

- Protected bike lanes
- End traffic fatalities
- Expand Circuit Trails
- Traffic calming & safer roads
- Laws & programs providing accessible transit infrastructure for all residents of our Region



## Join the MOVEMENT

- Discover shared interests throughout our Region at neighborhood meet-ups and events
- Explore the Region on group rides (or anytime with our Ride with GPS account)
- Represent in style with BCGP gear and other unique Members-only discounts
- Directly support BCGP's broad array of services for all residents across Greater Philadelphia!

## Subscribe



Get the Latest Updates in our Newsletter!

[bicyclecoalition.org/subscribe](https://bicyclecoalition.org/subscribe)

## Join



Become a Supporting Member!

[bicyclecoalition.org/members](https://bicyclecoalition.org/members)

## Donate



Make a One-Time Donation!

[bicyclecoalition.org/members/#donate](https://bicyclecoalition.org/members/#donate)

# GIVING BACK

## YOUTH CYCLING PROGRAM

Part of your Philly Bike Ride registration fee is donated to the Bicycle Coalition of Greater Philadelphia (BCGP) in support of advocacy, education, and youth cycling activities, including the Bicycle Coalition Youth Cycling program, which works with youth ages 12-18 across Philadelphia in building healthy habits, leadership, and independence through the sport of cycling.

The BCGP partners with community, governmental, public, and private entities to advocate and educate to make streets and trails safe and accessible and to encourage more people to engage in safe bicycling. BCGP is dedicated to promoting bicycling as a healthy, low-cost, environmentally-friendly form of recreation and transportation. Their Education Department has 3 major programs as well as smaller initiatives aimed at increasing equitable access to biking: Bicycle Coalition Youth Cycling program supported by Philly Bike Ride; The Better Bike Share Partnership dedicated to building partnerships to promote bike sharing in low-income neighborhoods; and Velolingo, engaging immigrant and refugee individuals by providing bicycle and safety education in the region's critical languages: Spanish, Mandarin, Vietnamese, Russian and Haitian Creole, as well as expanding our bicycle education classes and rides offered in Spanish.



## SPONSOR A RIDER

Philly Bike Ride strives to be inclusive, and with your support, the Sponsor A Rider scholarship program covers participation costs for riders who would otherwise not be able to join the ride. Join us in this mission, and we will match donations through registration dollar-for-dollar up to \$5,000!

For questions about the program, please email [HELLO@PHILLYBIKERIDE.COM](mailto:HELLO@PHILLYBIKERIDE.COM).



# OVER 100 COMMUNITY RIDERS SPONSORED

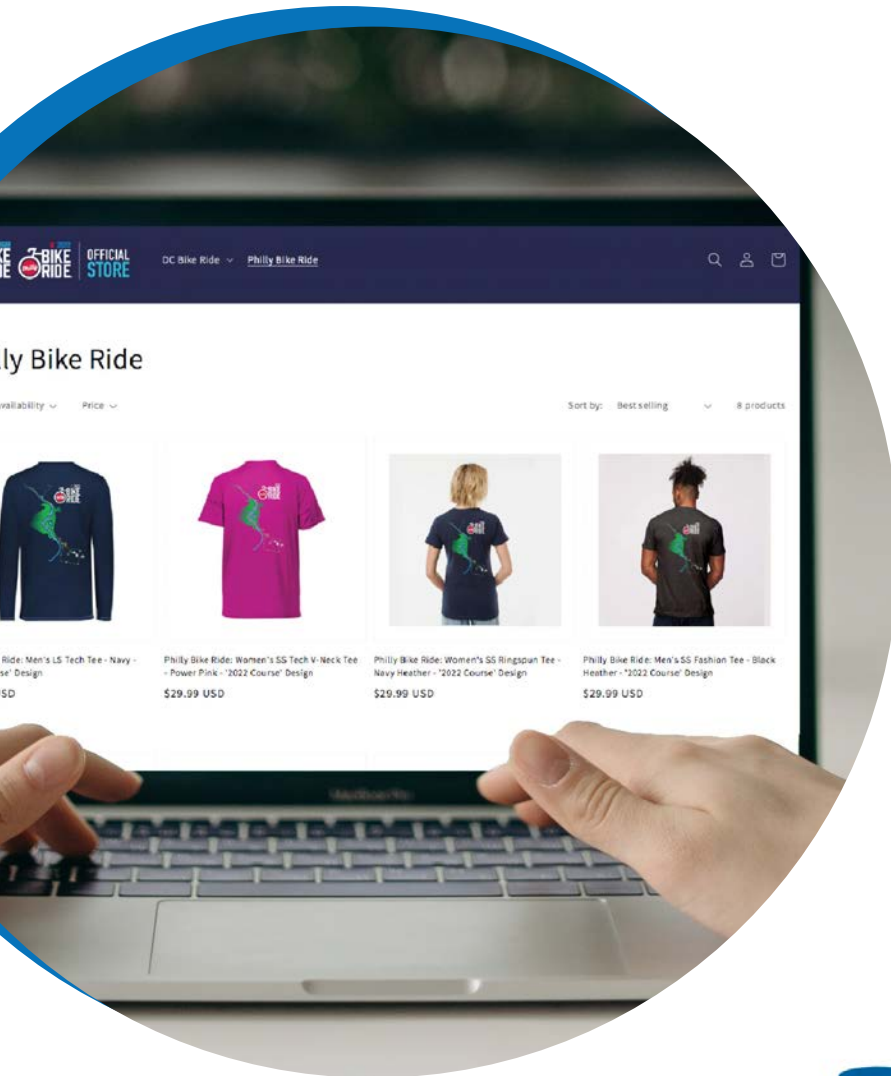
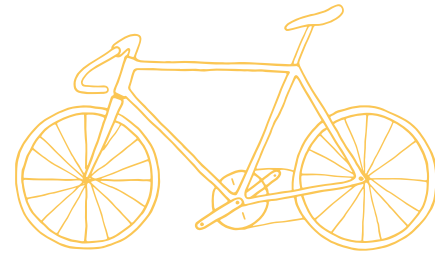




# OFFICIAL MERCHANDISE

Wear your love for bicycling and Philly Bike Ride on your sleeve. Shop for Philly Bike Ride gear at the Official Merchandise Shop at Packet Pickup and at the Finish Festival. Our retail partners have a great selection of men's, women's, and kid's T-shirts, plus cycling jerseys, jackets and more. [VISIT BIKERIDESHOP.COM/COLLECTIONS/PHILLY-BIKE-RI](https://www.bikerideshop.com/collections/philly-bike-ride) to see the full line of merchandise.

If you purchased merchandise online after September 30 or need to exchange an unworn item for a new size, please visit the PBR Pop-Up Shop at Packet Pickup or Finish Festival.



# THANK YOU TO OUR PARTNERS

## Founding Partner



## Official Partners



## Supporting Partners



## Media Partners







***SAVE THE DATE***

**SATURDAY**

**SEPT**

**9TH**

**2023**

***DCBIKERIDE.COM***